The background features a solid blue sky with several light blue, stylized clouds scattered across it. At the bottom of the image, there is a white silhouette of a city skyline with various building shapes and heights. The text is centered in the upper half of the image.

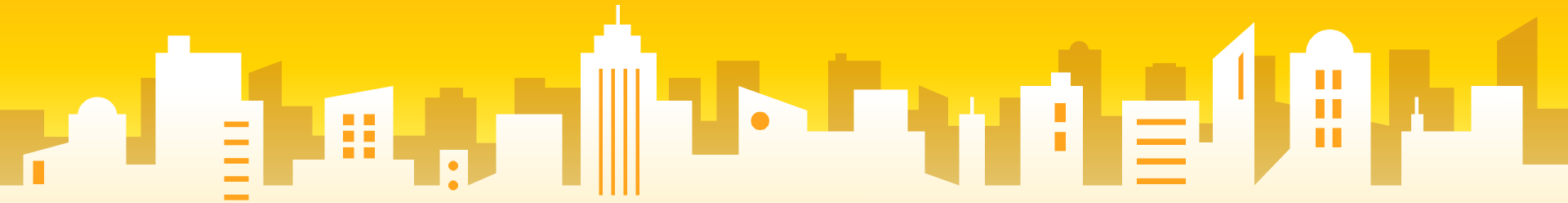
# Gr2 MP1 Lesson 8

## Where do organisms live?



**Day 1**

**What are habitats?**





1. What do all of these pictures have in common?



2. Do they help a living thing survive?

3. What kind of living things will you find in these pictures?

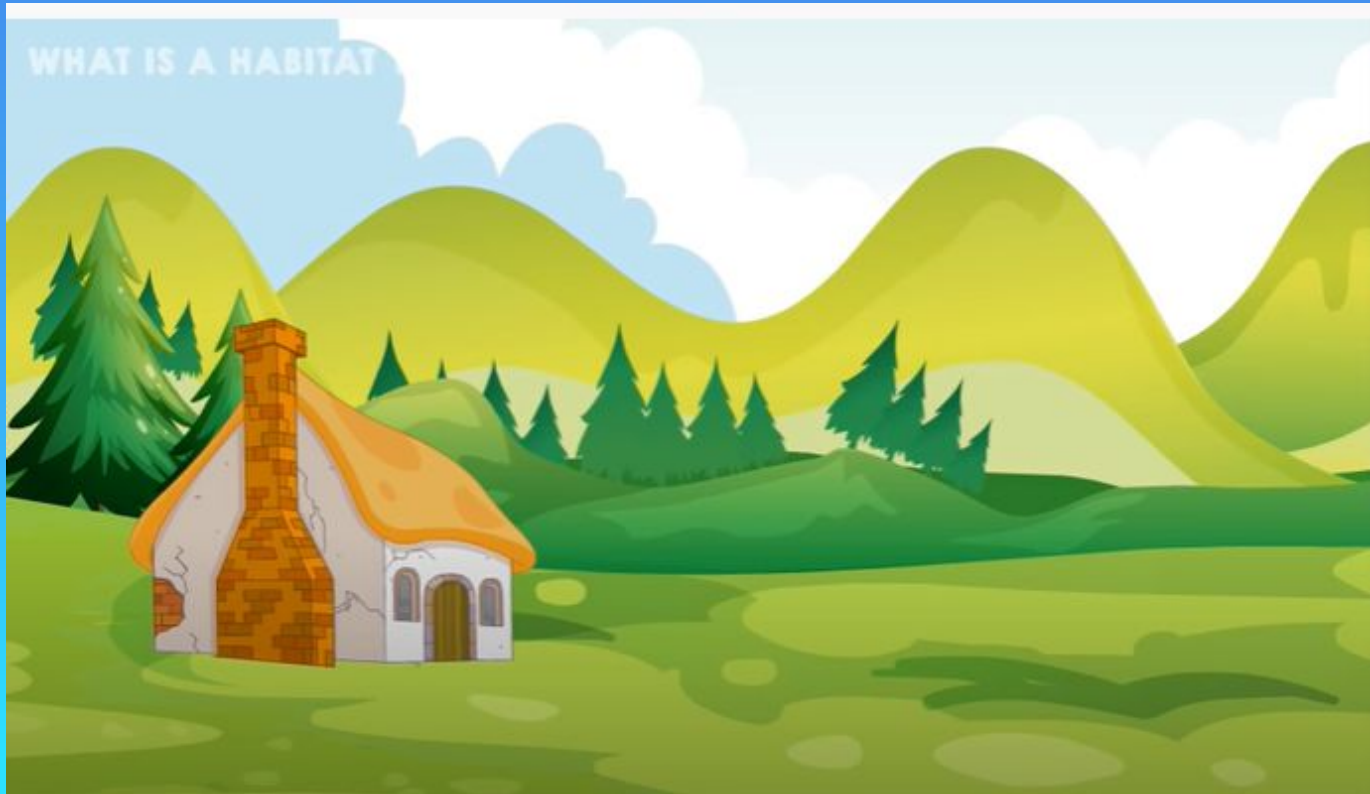


All of these pictures are example of habitats.



But what is a **habitat**?

# Where is your Habitat?



# What did you learn?



1. What is a habitat?
2. What does your habitat give you?
3. How many different habitats are in the world?
4. Do organisms change to stay in their habitat?

# The truth about... habitats

A habitat is a place that an animal lives. It provides the animal with food, water and shelter.

There are many different sorts of habitats around the world from forests to grasslands and from mountain slopes to deserts.

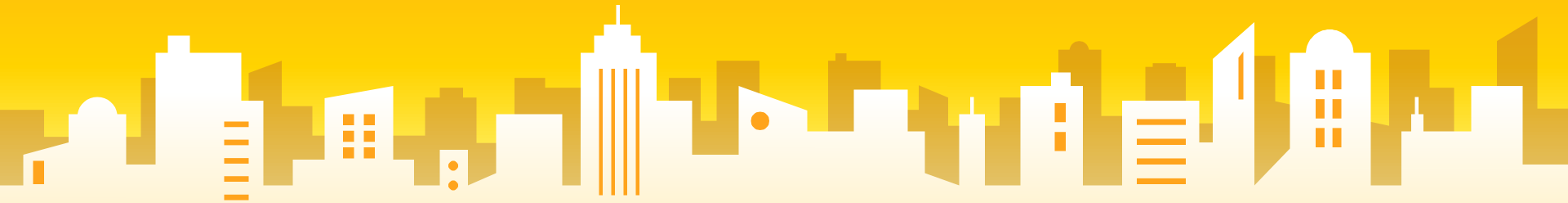


Different habitats are home to different animals. They live well together because they all do things to help keep the whole habitat healthy and in balance.

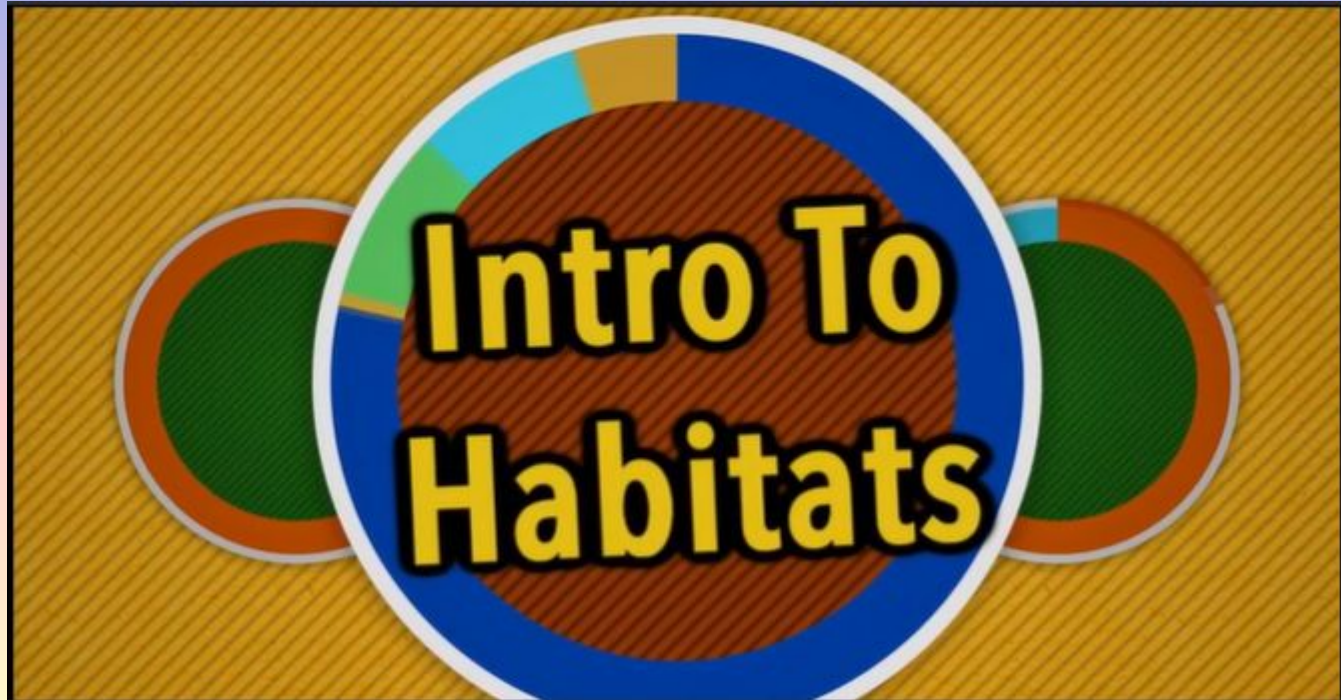


## Day 2

**Will organisms change  
their habitats as they go  
through life cycle stages?**

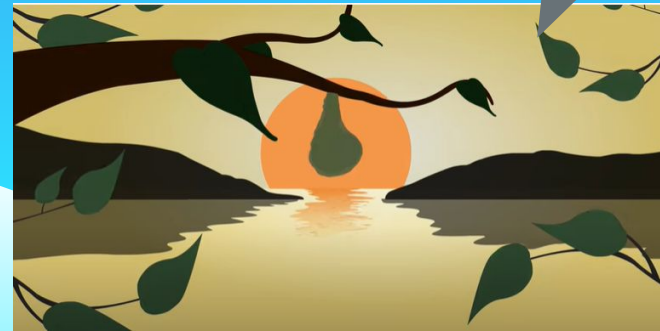
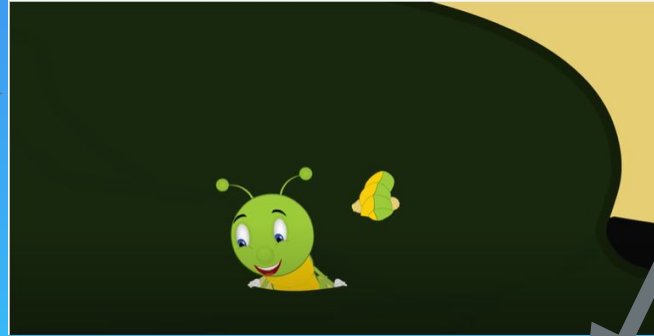


**What do we remember about habitats?**



**Look at the pictures of the Butterfly life cycle.**

How do the habitats change?



**Look at the pictures of the Butterfly life cycle.**

How do the habitats change?

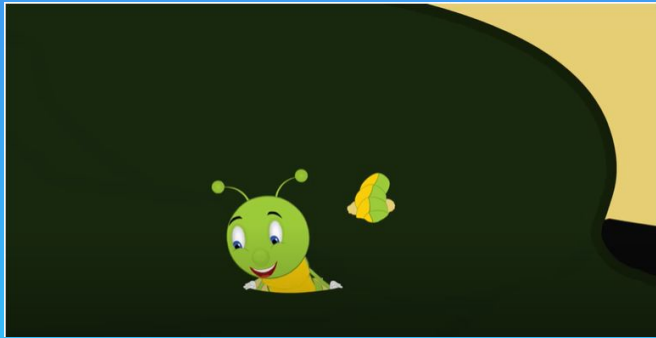


Stage 1 - Egg

The Eggs live on top of the leaf - its habitat is the top of the leaf

**Look at the pictures of the Butterfly life cycle.**

How do the habitats change?



**Stage 2 - Caterpillar**

Caterpillar lives on top and on the bottom of the leaf; will move from leaf to leaf eating and getting shelter.

**Look at the pictures of the Butterfly life cycle.**

How do the habitats change?



**Stage 3 - Cocoon  
(Chrysalis)**

Chrysalis attaches to a tree branch or underneath of the leaf and its habitat is inside the cocoon.

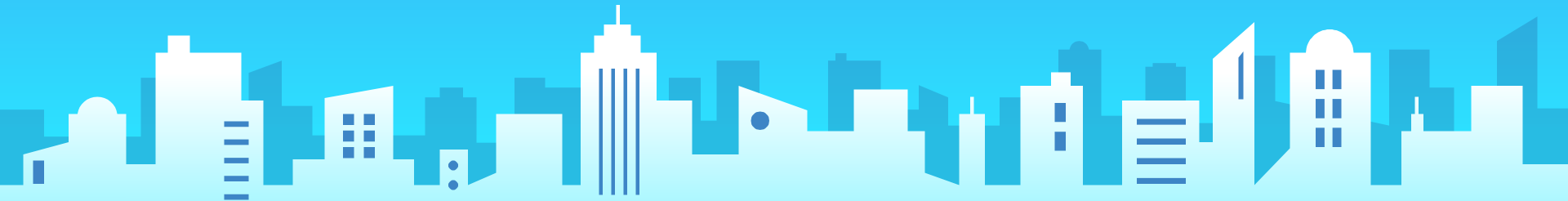
**Look at the pictures of the Butterfly life cycle.**

How do the habitats change?



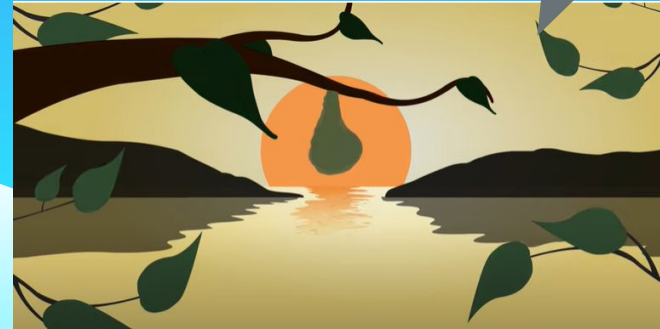
**Stage 4 - Butterfly**

Butterfly can fly around the entire environment and may even fly to new areas.

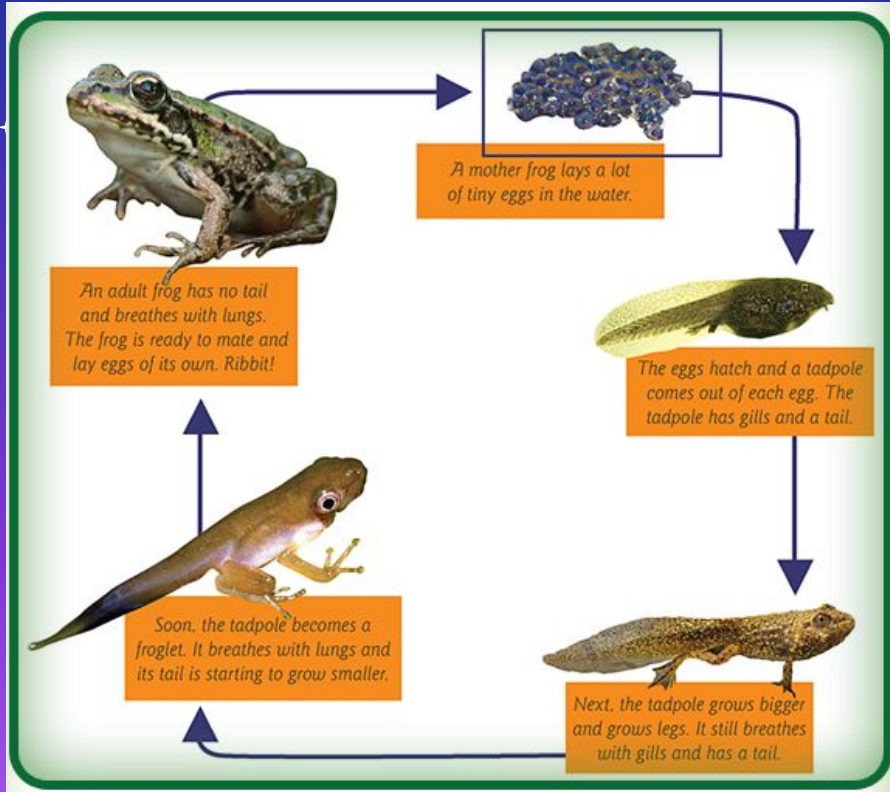


# Let's watch this Butterfly life cycle in action

How do the habitats change?

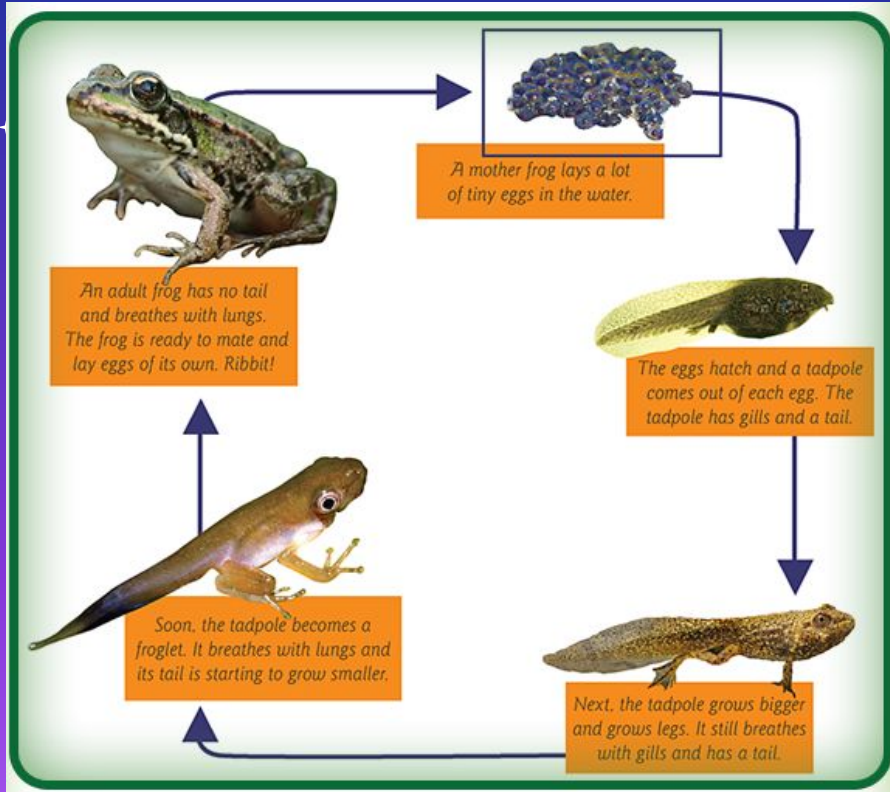


# Let's look at other life cycles and see if their habitats change!



Stage 1 - Egg	Found in water
Stage 2 - Tadpole	?
Stage 3 - Bigger tadpole	?
Stage 4 - Froglet	Move from water to land
Stage 5 - Adult Frog	?

# Let's look at other life cycles and see if their habitats change!



Stage 1 - Egg

Found in water

Stage 2 -  
Tadpole

Found in water

Stage 3 -  
Bigger tadpole

Found in water

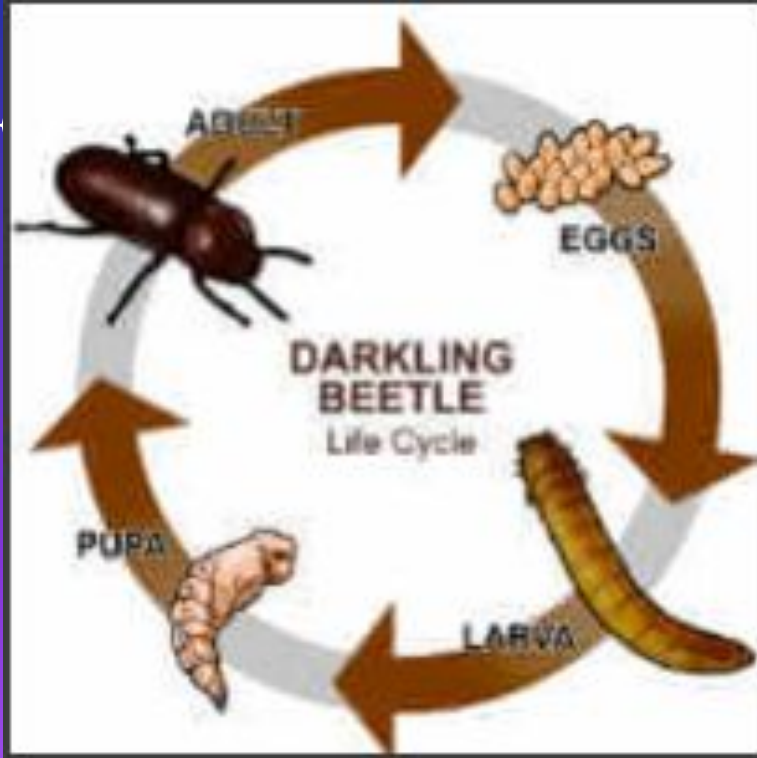
Stage 4 -  
Froglet

Move from  
water to land

Stage 5 - Adult  
Frog

Anywhere on  
land near water

# Let's look at other life cycles and see if their habitats change!



Stage 1 - Egg	
Stage 2 - Larva	
Stage 3 - Pupa	
Stage 4 - Adult	

[Watch the video](#) and see if you can identify the places or habitats of the stages of the Darkling Beetle life cycle stages.

The logo for Slides Carnival features the word "Slides" in white text on a blue square background with a folded corner effect, followed by the word "Carnival" in black text on a yellow background.

# Slides Carnival

**Free templates for all your presentation needs**



For PowerPoint and  
Google Slides



100% free for personal  
or commercial use



Ready to use,  
professional and  
customizable



Blow your audience  
away with attractive  
visuals